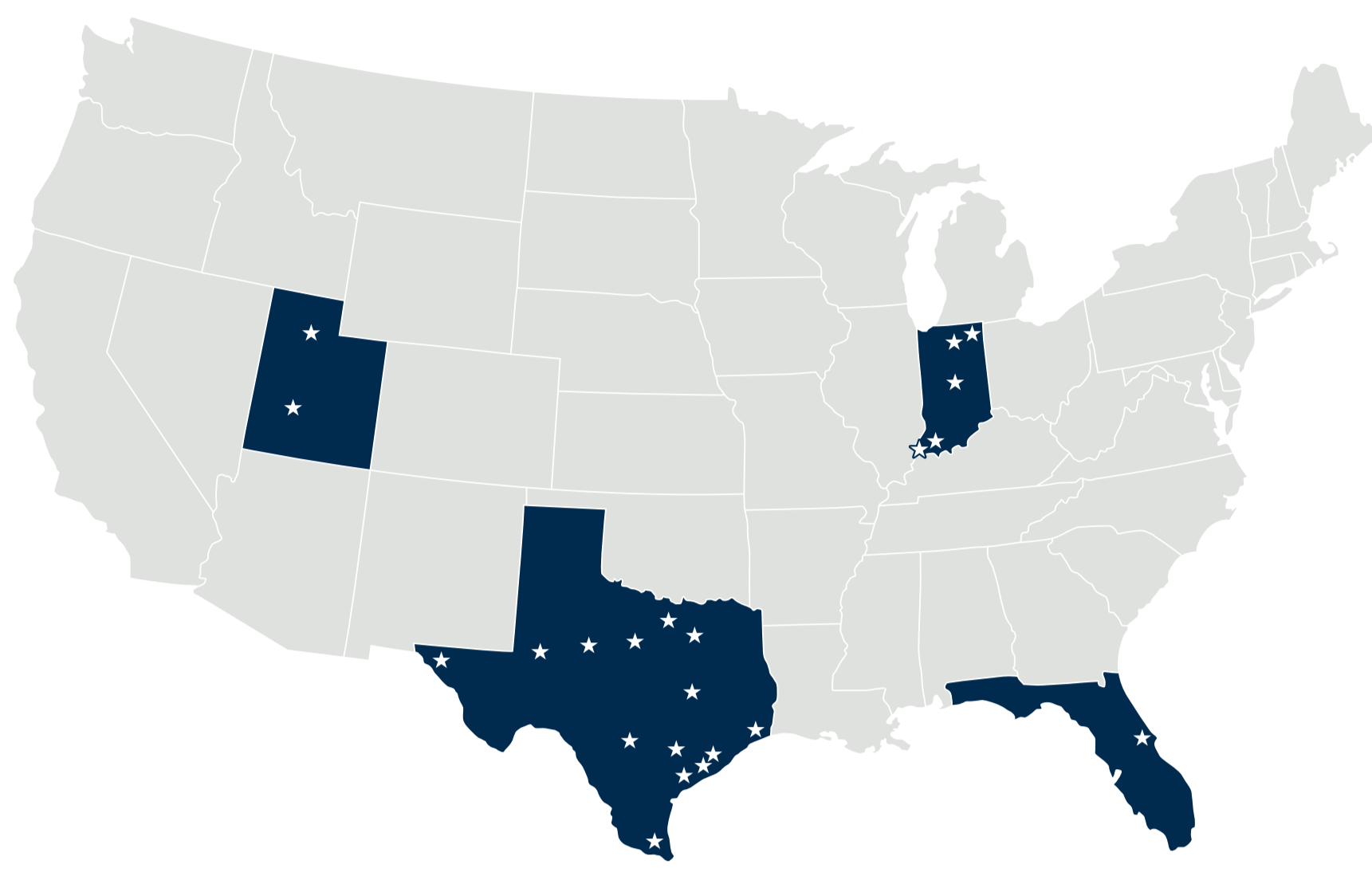


Upon graduation, students will earn a Bachelor of Science in Nursing and meet the requirements to sit for the NCLEX-RN exam. Students must pass the exam to become a licensed registered nurse.

## 1 WHERE ARE WE?

Prelicensure programs are offered in these areas:



**UTAH:** Salt Lake Valley, Southern Utah

**TEXAS:** Abilene, Baytown, Beaumont/Port Arthur, Bryan/College Station, Brownsville/Edinburg/Harlingen, Dallas, Decatur, El Paso, Houston, Graham, Lake Jackson, Lufkin/Livingston, Midland/Odessa, San Antonio, Texas City, The Woodlands, and Waco/Temple

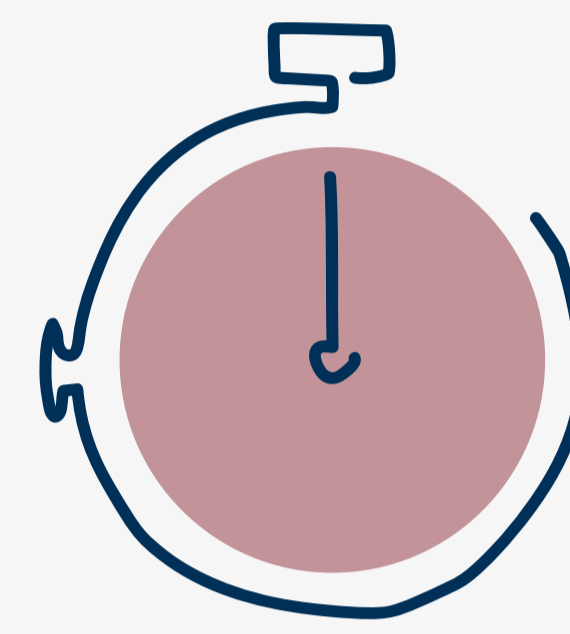
**INDIANA:** Elkhart/South Bend, Evansville, Fort Wayne, Indianapolis, and Vincennes

**FLORIDA:** Daytona Beach

## 2 LENGTH OF PROGRAM

**2.5 YEARS** (standard path and pace)

- Pre-Nursing Curriculum: Term 1 (six months)
- Clinical Nursing Curriculum: Terms 2–5



## 3 PREREQUISITES

To be eligible to apply for the prelicensure program, you must have completed the following prerequisites with a combined science GPA of 2.5 or higher. (All prerequisite courses must be completed before applying to WGU.)



- English Composition I
- Survey of United States Constitution and Government
- Introduction to Communication
- Introduction to Humanities
- Human Growth and Development Across the Lifespan
- Introduction to Psychology
- Introduction to Sociology
- Anatomy and Physiology I (with lab)
- Anatomy and Physiology II (with lab)
- Clinical Microbiology (with lab)

## 4 ADMISSION

There are two parts to the admission process:

### PART 1

**Pre-Nursing Curriculum\*—first six-month term**

- Online theory courses
- Essential Nursing Skills Lab—three days of lab simulations and testing on essential nursing skills

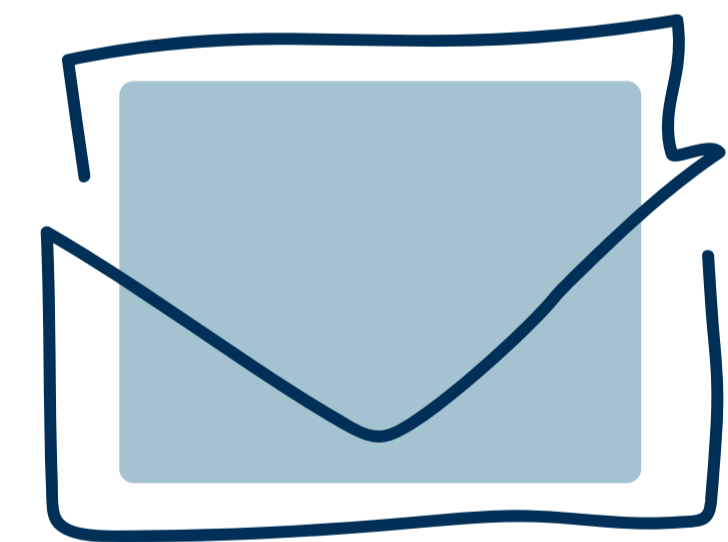
\*No clinical rotations occur in this term

### PART 2

**Clinical Nursing Curriculum—four six-month terms**

- Online theory courses
- Physical lab simulations and clinical rotations

**NOTE:** Admission is not guaranteed to either the Pre-Nursing or Clinical Nursing Curriculum terms



## 5 COST

**Tuition** \$5,280 (per term)

**Resource Fee** \$145 (per term)

**Program Fee** \$500 (per term)

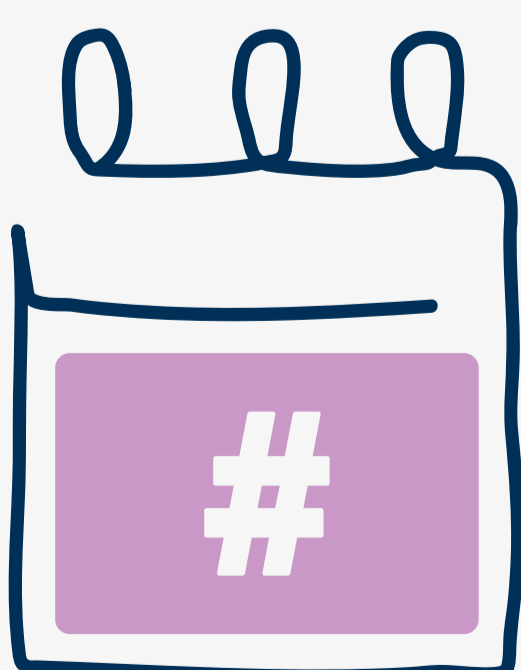
**Background Check/Drug Screening** \$94 (one-time, subject to change per state requirements)

**Uniforms** \$146.30 (plus shipping, handling, and taxes)

**Lab Kit Fees** \$263.09



## 6 START DATES



Start dates and deadlines are staggered and subject to change. Prelicensure programs begin at specific times, not the first of every month. Ask your WGU Enrollment Counselor about upcoming start dates.

GET STARTED NOW!

**PLEASE NOTE:** This is not a bridge program (not an LVN to RN or LVN to BSN). WGU is not able to give direct credit for holding an LVN license. Students must complete all 10 prerequisite courses to qualify for the program.